



IMPROVED CASE ACCEPTANCE USING QUALITY PROVISIONAL RESTORATIONS

MARK H. DOCKTOR, DDS, PA

With increasing emphasis on appearance-related therapy, the dental professional frequently encounters patients who are interested and require elective dental treatment but reject or continually postpone it for various reasons. Treatment delays may be attributed to patients' reluctance to alter their business schedules or interrupt their uncompromised appearance or masticatory function in order to facilitate a dental treatment that requires an extended period of time. The anticipated duration of treatment and the expected inconveniences interpreted by the patient have resulted in loss of patients and patient morale, emphasizing the need for aesthetic provisional restorations that can serve as a replacement in the interim period with a minimum of inconvenience.

The dental team must successfully communicate these restorative alternatives to their patients. An informed patient will then be in the position to elect and accept the treatment, understanding that neither appearance nor function will be compromised during the interim period. The treatment will be seamless, without interruption of aesthetic appearance and function, and the final restorative result will be aesthetically acceptable to the patient. Having overcome the reluctance, a satisfied patient will enthusiastically refer others for similar treatment and enhance the overall restorative productivity of the practice.

These provisional restorations serve as the seamless intermediaries between preparation and the final restoration.

A new system of provisional restorations (The BioTemps System, Glidewell Laboratories, Newport Beach, CA) has been developed to address this need. These provisional restorations serve as the seamless intermediaries between preparation and the final restoration. They are aesthetic in appearance, they can be quickly and effectively manufactured, and they provide longevity, comfort, and cleanliness for normal function.

Depending upon the particular treatment required by each patient, the clinician may emphasize the specific benefits that can be attained with prefabricated provisional restorations. For example, the patient may require quality provisionalization during a soft tissue management regimen to restore gingival health or a surgical healing period in order to stabilize the periodontal complex and allow adequate soft tissue rehabilitation. Proper provisionalization returns the periodontal tissue to its natural anatomic contour for improved prophylaxis, function, and aesthetics. In addition, the patient and the clinician will have the opportunity to review the aesthetic expectations of the treatment by evaluating the provisional restorations, which can be easily adjusted or modified chairside with composite resin materials and topical stains.

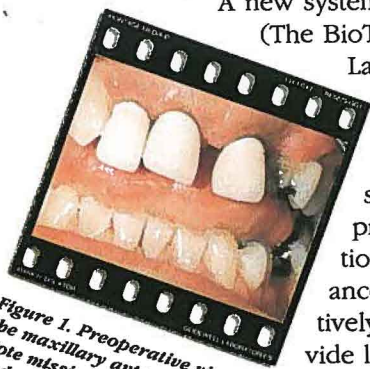


Figure 1. Preoperative view of the maxillary anterior teeth. Note missing left lateral teeth and the wide diastema.



Figure 2. Preoperative occlusal view in cast of the maxillary arch.

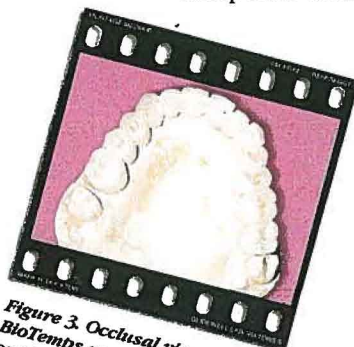


Figure 3. Occlusal view of the BioTemps restorations placed on the study model.

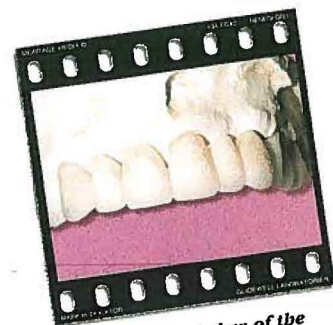


Figure 4. Facial view of the BioTemps restorations placed on the study model.



These processes are achieved while the patient continues to perform daily functions, with confidence and without interruption.

By carefully evaluating the aesthetics of individual cases, the clinician can easily adjust the acrylic of the provisional restoration, ie, line, reline, recontour, occlusally adjust, add to, and/or modify after healing and shrinkage.

INDICATIONS

- Patients requesting appearance-related therapy, where aesthetics are the primary concern.
- Perio-prosthetic patients, particularly those involving several consecutively missing or immediately postextraction teeth. The temporary restoration is fabricated prior to the periodontal treatment and modified postsurgically before completing the prosthetic phase.
- Crown and bridge patients who require temporary restoration for an extended period of time.
- Periodontal patients who cannot afford porcelain-fused-to-metal bridgework and/or whose remaining teeth have an unfavorable long-term prognosis.

BENEFITS OF ACRYLIC PROVISIONAL RESTORATIONS

The benefits of the BioTemps system can be summarized as follows:

- **Less Chairtime**

The expediency of the placement of provisional restoration requires

less chairtime with fewer interruptions in the patient's schedule. This benefit is ideal for patients who either cannot or will not commit themselves to lengthy dental sessions.

- **Extended Healing and Evaluation Time**

The aesthetics of the provisional restoration stimulates patient acceptance and improves function during extended wear.

- **Flexibility**

BioTemps restorations can be fabricated with an optional cast nonprecious metal substructure, over which the heat- and pressure-cured acrylic is artistically designed to suit the individual patient. The temporary restorations can be easily adjusted, modified, and refined chairside to accommodate the patient's expectations.

These features dramatically improve the expectations of the patient. The BioTemps system offers a seamless restorative treatment plan, extensive adaptability, is kind to the periodontium, and improves case acceptance. Implementing in practice what is now possible will expand the current range of quality services.

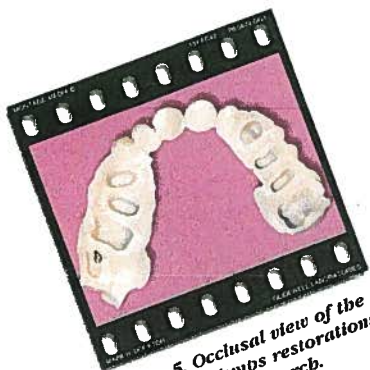


Figure 5. Occlusal view of the refined BioTemps restorations for the maxillary arch.

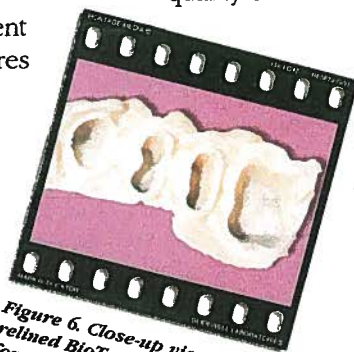


Figure 6. Close-up view of the refined BioTemps restorations for the right lateral region of the maxillary arch.

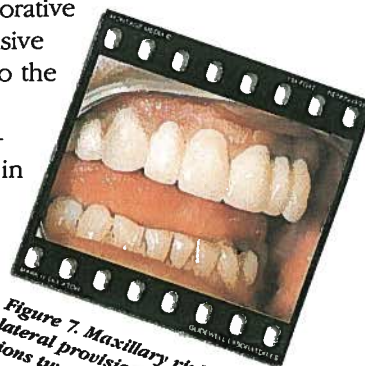


Figure 7. Maxillary right lateral provisional restorations two weeks post-preparation.

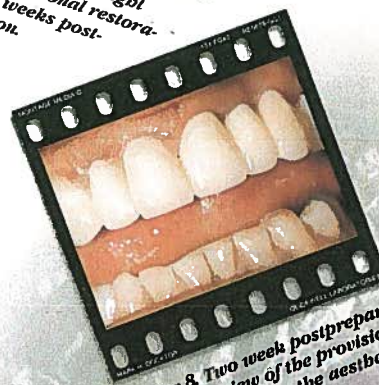


Figure 8. Two week postpreparation facial view of the provisional restorations. Note the aesthetics and soft tissue healing.